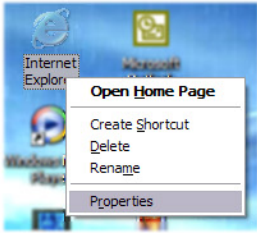
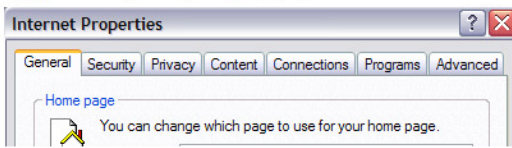


CREATING A NEW DIAL UP ACCOUNT

- 1) On the **DESKTOP** you need to **RIGHT-CLICK** on the Internet Explorer icon, and select **PROPERTIES**.



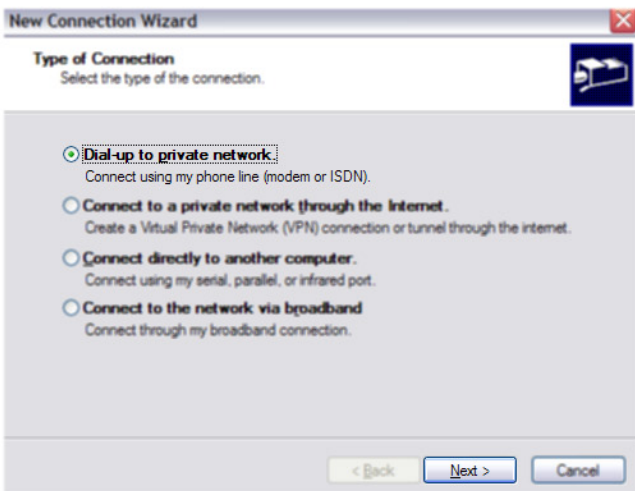
- 2) A new window will open up with a series of tabs at the top. **CLICK** on the **CONNECTIONS** tab.



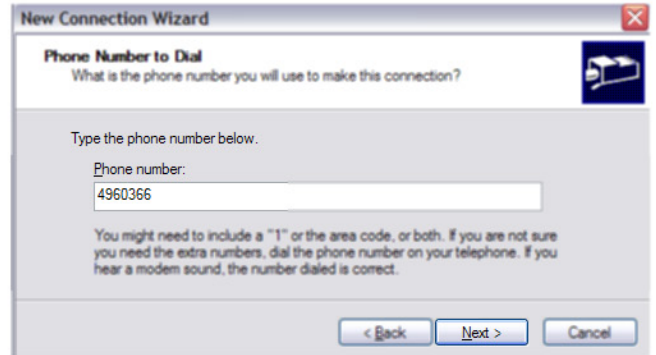
- 3) **CLICK** the **ADD** button to create a new dial-up connection.



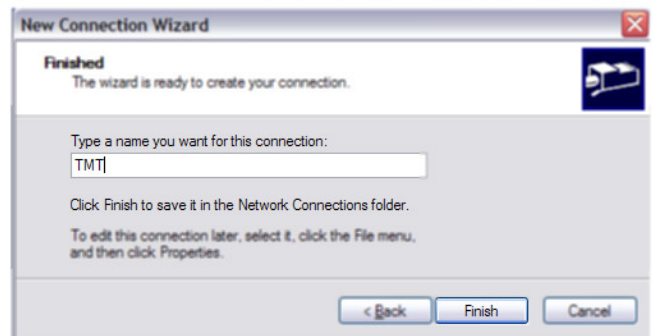
- 4) **CLICK** the **TOP OPTION** and then **CLICK NEXT**.



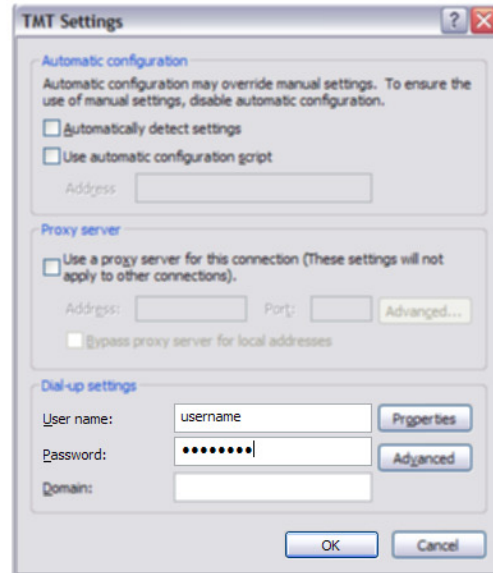
- 5) **TYPE** the dial-up access number for your area. Morton is **4960366** and Mossyrock is **9833090**



- 6) **TYPE** in **TMT** for the connection's name.



- 7) **TYPE** your **USERNAME** and **PASSWORD** exactly the same as you set up with us.



360-496-6161

360-985-0240

WWW.LEWISCOUNTY.COM

